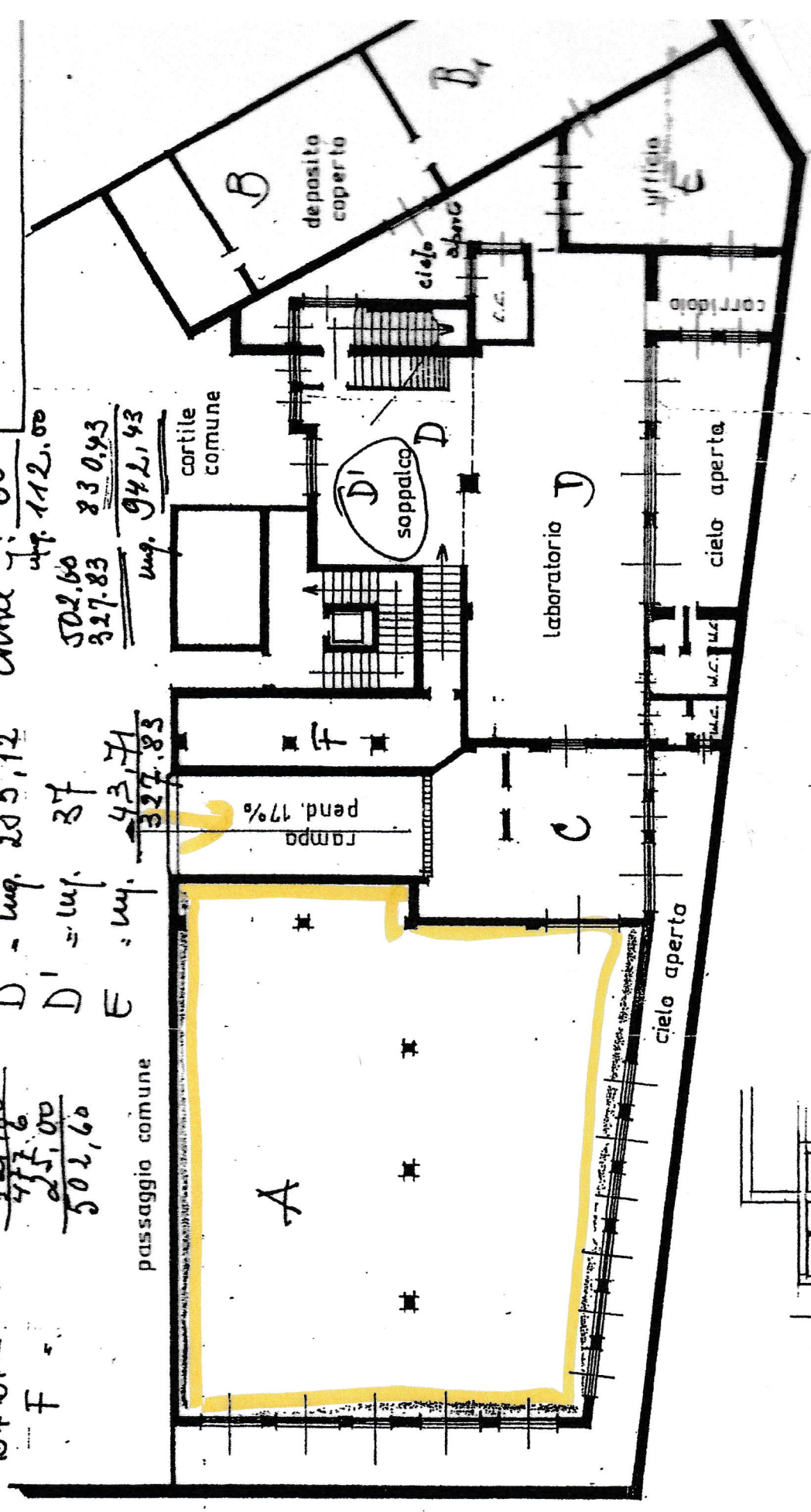


A = mq. 355,80
 B + B' = mq. 121,80
 F = mq. 43,74

C = mq. 42
 D = mq. 205,12
 D' = mq. 37
 E = mq. 43,74

Porticato, 52
 Cortile 60
 mq. 112,00
 502,60
 327,83
 mq. 942,43

passaggio comune
 327,83



PIANO INTERRATO
 LABORATORIO
 H. 4,60

